

Collis Mediation Ltd

Mediation
Disagreement Resolution
Alternative Dispute Resolution
SEND 0-25 Consultancy
CMC Accredited Training Provider

Special Educational Needs & Disabilities (SEND) Accredited Mediation Training



COLLIS MEDIATION LTD

Registered Office: 6 Marchcote, Cottingley, Bingley, West Yorkshire, BD16 1TA.
Web: www.collismediationltd.com Email: info@collismediationltd.com Tele: 07715 958 290
Company Number: 08749080 VAT Number: 177 0949 71 UTR Number: 6042834579



Becoming a SEND Mediator

This two-day specialist training programme is intended for those delegates that have already achieved Civil Mediation Council (CMC) or College of Mediators (CoM) accreditation as a Civil & Commercial mediator, and who wish to make the specialist area of SEND mediation part of their offering.

This course attracts 12 hours CPD, and successful completion will satisfy the requirements of the Civil Mediation Council for accreditation as a SEND mediator, once a period of supported practice is complete.

There is no prerequisite for delegates to have had experience in either Education, SEND 0-25 roles or in SEND Law. It is essential however that delegates have a genuine interest in people and supporting all participants to achieve the right outcomes for children and young people.

Over 60% of all statutory SEND disagreements proceed to mediation or disagreement resolution. Once accredited, you will have the skills, knowledge, and expertise to chair some of the 4000+ mediations which take place annually.

What does the training look like?

This two-day specialist training programme is approved by the Civil Mediation Council and College of Mediators and covers both the theoretical and practical elements required for accreditation as a specialist SEND mediator.

After having attended a specialised training programme, mediators will be required to engage in a period of supported practice in order to reach accreditation. This should consist of, at least 12 hours of casework and a further 2 hours of reflection on their practice.

The supported practice allows newly trained mediators to take opportunities to observe a SEND mediation case, before progressing to co-working and finally taking a lead.

Delegates are free to complete their level 2 components independently of Collis Mediation Ltd, via a professional practice consultant or alternative organisation. However, Collis Mediation Ltd is unique in its commitment to ensuring that all delegates are equally afforded access to the subsequent casework and observation elements of the process.

Why Choose Collis Mediation Ltd?

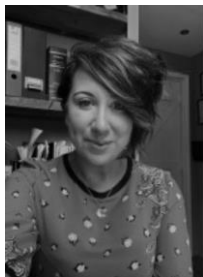
Collis Mediation Ltd are one of the country's leading independent, impartial, and confidential SEND Mediation specialists, contracted by the government, to work with local authorities, parents, carers, and young people to help clarify, narrow down and resolve disagreements about the education of children and young people with special educational needs and disabilities.

Collis Mediation Ltd are one of the few approved training providers who are approved and listed on the Civil Mediation Council SEND Mediator register and currently conduct in excess of 15% of all SEND Mediation in the UK and able to offer a full enhanced period of support.



Dominic Collis, Managing Director of Collis Mediation Ltd and lead tutor, has the benefit of chairing more than 3000 mediations, which makes him one of the country's most experienced SEND mediators. Collaborating with schools, academies, local authorities, parents, carers and young people on a daily basis, Dominic is considered a specialist in the statutory SEND framework. He holds a Chartered Fellowship with the CMI, is a Mediation Provider

Organisation and mentor for the Civil Mediation Council, a professional member of Neurodiversity in Law, whilst also holding qualifications in delivering SEND strategies in the classroom.



Nicola Cleaver comes to Mediation from a legal background having practiced Criminal Law for 11 years. Nicola has a wealth of experience involving young children as a result of her legal practice and is initiative-taking in promoting and harnessing the voice of the child in SEND mediation and Dispute Resolution. Nicola has undertaken numerous training courses with the National Autistic Society and the NHS concentrating on Autistic Spectrum Disorder as well as Sensory Processing Deficiencies and Speech, Language & Communication

Methods. Nicola is part of the Senior Leadership Team at Collis Mediation Ltd and is an accredited Civil and Commercial Mediator, a SEND Registered Mediator with the CMC & CoM and in demand trainer.



Nancy Radford has been a Civil and Commercial Mediator for 6 years. She is an Accredited Mediator in Special Educational Needs and Disability on the Joint Register of the College of Mediators & CMC and has been working in SEND Mediation for 5 years. She is a qualified trainer and coach. For the last 13 years she has specialised in change management and conflict resolution. She is the author of *Conflict First Aid: How to Stop Personality Clashes and Disputes from Damaging You or Your Organisation*, based on research and experience (Jan 2018)

Course Details

Please find below, a brief overview of the learning modules contained within this programme.

<u>Day 1</u>	<u>Day 2</u>
Types of SEND General overview	Managing Multi-Party Meetings
Language & Definition	Working with Advocates
Relevant Legislation	Parental Responsibility
Role of Professionals	Authority to Settle in SEND
The Graduated Approach	Agreement writing in a SEND context
Reasonable Adjustments	Send Tribunal
Education, Health and Care Plan (EHCP)	How the Mediation Provider works as an Organisation
Preparing for Mediation	Local Offer
CYP Participation 'The Voice of the Child'	Self-Reflection
Power Balancing in SEND Mediation	

Learning Outcomes

Learning SEND procedures and processes

Exploring Statutory Timescales and the Legal Framework in which they sit - Obtaining appropriate SEND skills, knowledge, and expertise

Understanding your responsibilities for the overall practice

Developing an impartial approach whilst empowering and supporting

Course cost

Level 1-

Two-day SEND mediation course £1250 + vat

Level 2-

Enhanced Supported Practice

Up to 14-hours enhanced supported practice £75 per hour + vat

Upcoming dates and locations

24th-25th January 2022 - Suffolk

21st-22nd February 2022 - Leeds

21st-22nd March 2022 - London

For further details on training and accreditation, contact us via our website at www.collismediationltd.com or via email: info@collismediationltd.com